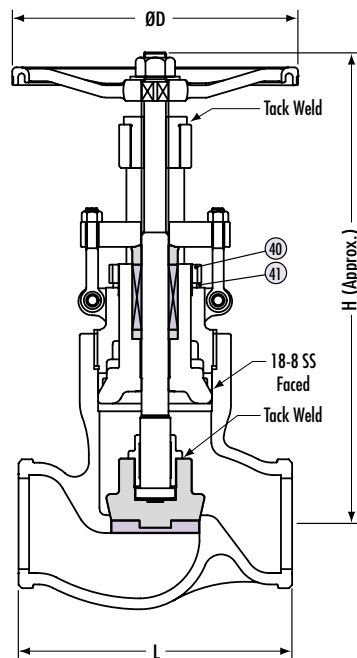
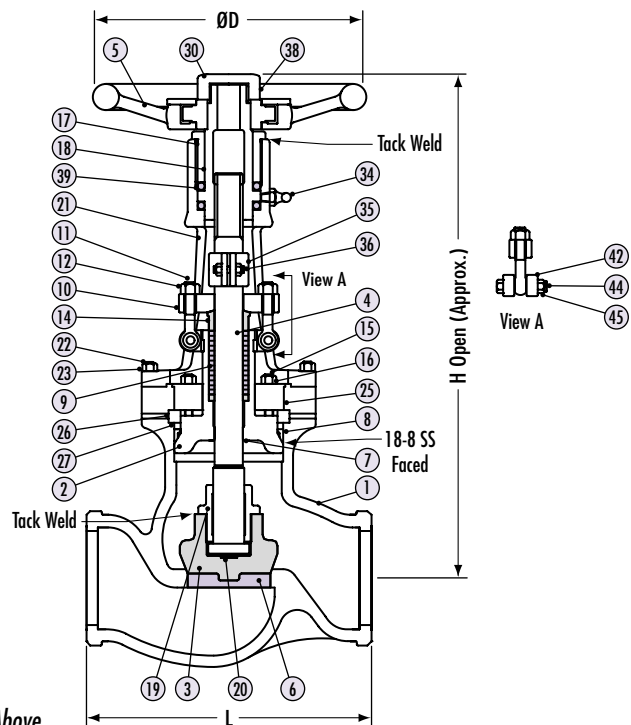


Technical Data CAST STEEL • Globe Valves • Straight Pattern Design

(Class 600-7161U, 900-7173U, 1500-7179U, 2500-7185U)



4" & Below



6" & Above

Dimensional Data (in.), Weights (lbs.) and Flow Coefficients (Cv)

| Class 600 | 2 | 2 1/2 | 3 | 4 | 6 | 8 | 10 | 12 |
|-----------|-------|-------|-------|-------|-------|-------|-------|-------|
| Wt. (lbs) | 95 | 195 | 200 | 300 | 600 | 1200 | 1600 | 2350 |
| L | 7.00 | 8.50 | 10.00 | 12.00 | 18.00 | 23.00 | 28.00 | 32.00 |
| D | 8.82 | 12.40 | 12.40 | 13.98 | 19.69 | 22.05 | 24.80 | 27.95 |
| H | 15.98 | 18.35 | 21.93 | 22.60 | 33.15 | 41.18 | 41.97 | 52.13 |
| Cv | 47 | 109 | 109 | 199 | 477 | 849 | 1303 | 1964 |

Class 900

| | | | | | | | | |
|-----------|-------|-------|-------|-------|-------|-------|-------|-------|
| Wt. (lbs) | 95 | 195 | 232 | 440 | 700 | 1200 | 1600 | 2350 |
| L | 8.50 | 10.00 | 12.00 | 14.00 | 20.00 | 26.00 | 31.00 | 36.00 |
| D | 12.40 | 12.40 | 12.40 | 13.98 | 17.71 | 27.95 | 27.95 | 31.50 |
| H | 22.64 | 24.02 | 23.03 | 26.73 | 35.47 | 35.90 | 42.60 | 47.71 |
| Cv | 41 | 100 | 100 | 186 | 438 | 771 | 1203 | 1759 |

Class 1500

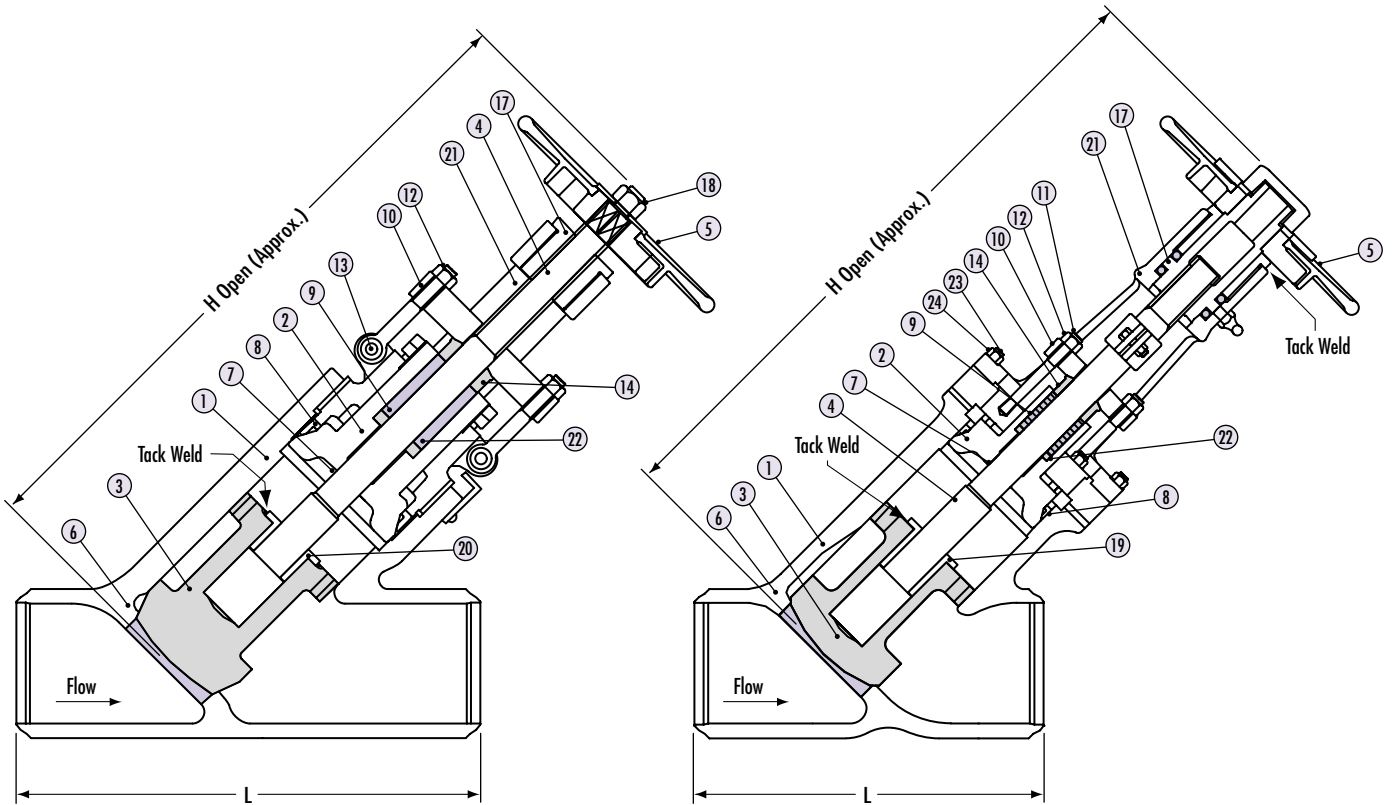
| | | | | | | | | |
|-----------|-------|-------|-------|-------|-------|-------|-------|-------|
| Wt. (lbs) | 190 | 210 | 231 | 400 | 1000 | 3100 | 5025 | 6200 |
| L | 8.50 | 10.00 | 12.00 | 16.00 | 22.00 | 28.00 | 34.00 | 39.00 |
| D | 12.40 | 13.98 | 13.98 | 15.75 | 19.69 | 24.80 | 31.50 | 35.43 |
| H | 22.64 | 24.02 | 25.91 | 30.12 | 39.17 | 48.50 | 56.30 | 62.80 |
| Cv | 41 | 91 | 91 | 163 | 382 | 672 | 1049 | 1529 |

Class 2500

| | | | | | | | | |
|-----------|-------|-------|-------|-------|-------|-------|-------|-------|
| Wt. (lbs) | 155 | 242 | 250 | 475 | 1900 | 4410 | 5500 | 7250 |
| L | 11.00 | 13.00 | 14.50 | 18.00 | 24.00 | 30.00 | 36.00 | 41.00 |
| D | 13.98 | 15.75 | 15.75 | 17.71 | 24.80 | 27.95 | 35.43 | 43.00 |
| H | 22.24 | 34.25 | 34.25 | 35.98 | 44.17 | 53.35 | 61.93 | 69.06 |
| Cv | 26 | 61 | 61 | 102 | 253 | 453 | 720 | 1057 |

Technical Data CAST STEEL • Globe Valves • Y-Pattern Design

(Class 600-Y-7161U, 900-Y-7173U, 1500-Y-7179U, 2500-Y-7185U)



Dimensional Data (in.)

| Class 900 | 2 | 3 | 4 | 6 | 8 | 10 | 12 |
|-------------------|-------|-------|-------|-------|-------|-------|-------|
| L | 14.50 | 15.00 | 18.00 | 24.00 | 29.00 | 33.00 | 38.00 |
| H | 22.83 | 23.03 | 27.17 | 35.83 | 40.16 | 46.46 | 51.18 |
| Class 1500 | | | | | | | |
| L | 14.50 | 18.50 | 21.50 | 27.75 | 32.75 | 39.00 | 44.50 |
| H | 22.84 | 22.83 | 30.12 | 37.80 | 48.03 | 58.27 | 68.90 |
| Class 2500 | | | | | | | |
| L | 17.75 | 22.75 | 26.50 | 36.00 | 40.25 | 50.00 | 56.00 |
| H | 23.23 | 35.43 | 34.25 | 44.88 | 52.17 | 70.28 | 77.56 |