

DSI® offers NDE Testing, a variety of Product Modifications and Accessories, saving our customers time and resources by eliminating the need for multiple purchase orders, time and transportation costs.

A single warranty then applies to each modified product, with each product inspected for quality and conformance to our customer's specifications and industry standards.

Available Modifications for DSI® Cast Steel Valves

- Packing and Gasket Changes
- End Connection Modifications
- Gear Operator Mounting
- Trim Changes
- Actuation
- Cryogenic Gas Columns
- Hand Wheel Extensions
- Teflon® Disc Inserts
- Drilled & Tapped Body/Bonnet Connections
- By-Pass
- Pressure Equalizing
- Acid Shields
- Oxygen & Chlorine Cleaning & Packaging
- Weld End Bore Changes
- Customer Specified Coatings
- Outside Lever & Weight for Check Valves
- Slam Retarders for Check Valves
- Chain Wheel Operator
- Block and Bleed
- API Performance Testing

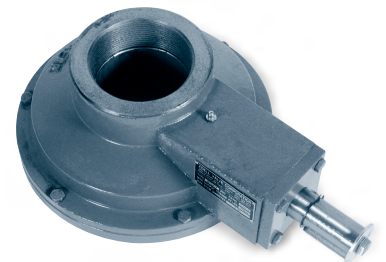
NDE Testing Available

- Dye Penetrant Test
- Magnetic Particle Test
- Radiography
- PMI (Positive Material Identification)

DSI® Cast Steel Valves Standard Product Range with Zy-Gear Bevel Gear Chart

DSI® offers a broad range of standard commodity Cast Steel Valves in flanged and weld end connections. The chart for Zy-Gears is based on torque ratings for each valve at maximum differential pressure.

Valve Type	Pressure Class	Size Range	Bonnet	Disc	Zy-Gear
Gate	150	2"-48"	Bolted OS&Y	Flex	2"-12" - 107B 14"-24" - 207B 30" & 36" - 307B
	300	2"-30"	Bolted OS&Y	Flex	2"-10" - 107B 12"-20" - 207B 24" & 30" - 307B
	600	2"-24"	Bolted OS&Y	Flex	2"-6" - 107B 8"-12" - 207B 14"-24" - 307B
	900	2"-24"	Bolted OS&Y	Flex	2"-6" - 107B 8"-10" - 207B 12"-16" - 307B
	1500	2"-12"	Bolted OS&Y	Flex	2"-4" - 107B 6"-8" - 207B 10"-12" - 307B
Globe	150	2"-14"	Bolted OS&Y	Plug	2"-14" - 207B
	300	2"-12"	Bolted OS&Y	Plug	2"-8"* - 207B
	600	2"-8"	Bolted OS&Y	Plug	2"-8" - 207B
Swing Check	150	2"-24"	Bolted	Swing	N/A
	300	2"-24"	Bolted	Swing	N/A
	600	2"-16"	Bolted	Swing	N/A



Industry inter-changeable pre-drilled mounting pattern per MSS SP101.

Note: DSI® Cast Steel Globe and Check Valves are available in Classes 900 and 1500. Contact your DSI® salesperson for more information. *10" & 12" standard from factory. • Note: All information is subject to change without notice.