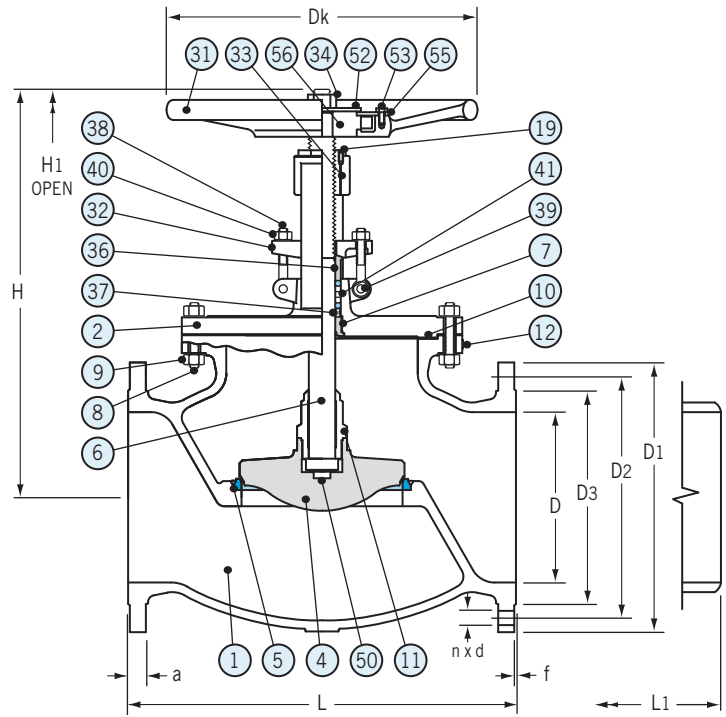


WCB, LCC: NPS 2"-10"
 Chrome Alloy: NPS 2"-6"



WCB, LCC: NPS 12"
 Chrome Alloy: NPS 8"-12"

Dimensional Data (in.) & Flow Coefficient (Cv)

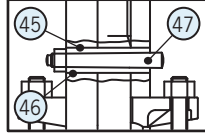
End Flange

Size	D	D1	Bolt Hole			D3	a	f	L	L1	H	H1 (Open)	Dk	Wt. Lbs.	Cv
			D2	n	d										
2	2.00	6.00	4.75	4	0.75	3.62	0.63	0.06	8.00	8.00	12.57	15.31	7.90	51	46.9
2 1/2	2.50	7.00	5.50	4	0.75	4.13	0.71	0.06	8.50	8.50	15.16	15.94	9.80	84	72.2
3	3.00	7.50	6.00	4	0.75	5.00	0.75	0.06	9.50	9.50	13.27	17.05	13.98	139	105.5
4	4.00	9.00	7.50	8	0.75	6.18	0.94	0.06	11.50	11.50	17.20	19.84	15.75	243	166.0
6	6.00	11.00	9.50	8	0.87	8.50	1.00	0.06	16.00	16.00	19.68	23.03	15.75	370	400.0
8	8.00	13.50	11.75	8	0.87	10.63	1.12	0.06	19.50	19.50	21.18	24.21	17.70	615	810.0
10	10.00	16.00	14.25	12	0.98	12.75	1.19	0.06	24.50	24.50	24.65	28.35	23.60	617	1310.5
12	12.00	19.00	17.00	12	0.98	15.00	1.25	0.06	27.50	27.50	28.58	32.68	22.05	833	1900.6

Note: All information is subject to change without notice.

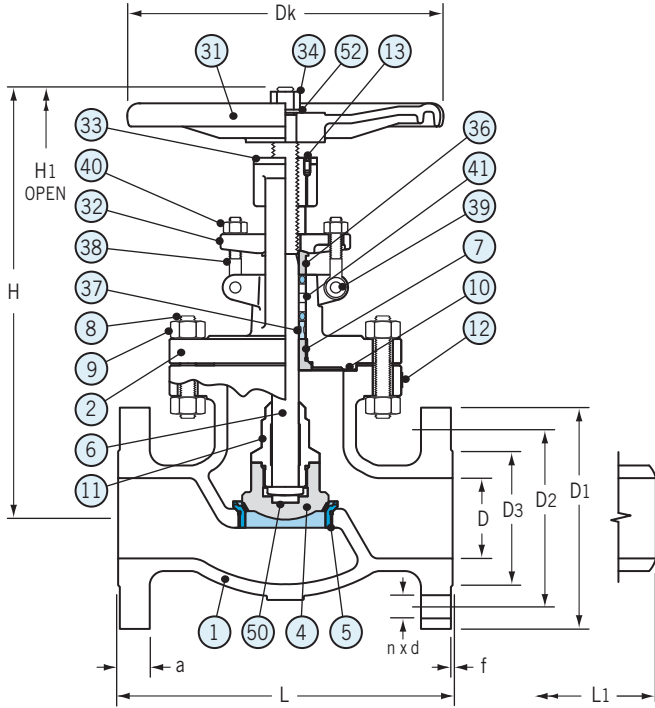
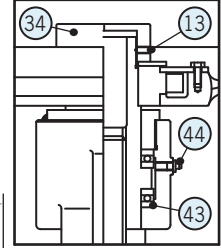
Stopper Detail

WCB, LCC: NPS 10"-12"
 Chrome Alloy: NPS 8"-12"

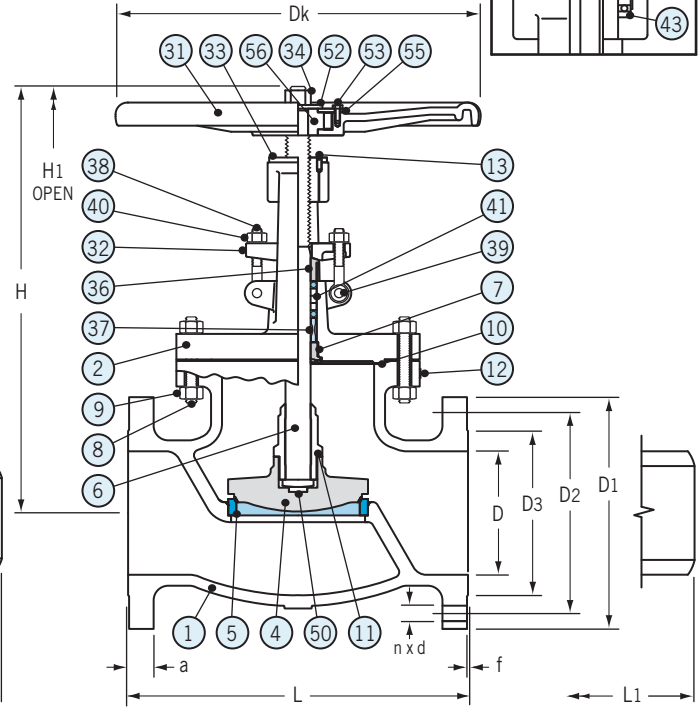


Ball Bearing Yoke Sleeve Detail

WCB, LCC: NPS 10"-12"
 Chrome Alloy: NPS 8"-12"



WCB, LCC: NPS 2"-6"
 Chrome Alloy: NPS 2"-3"



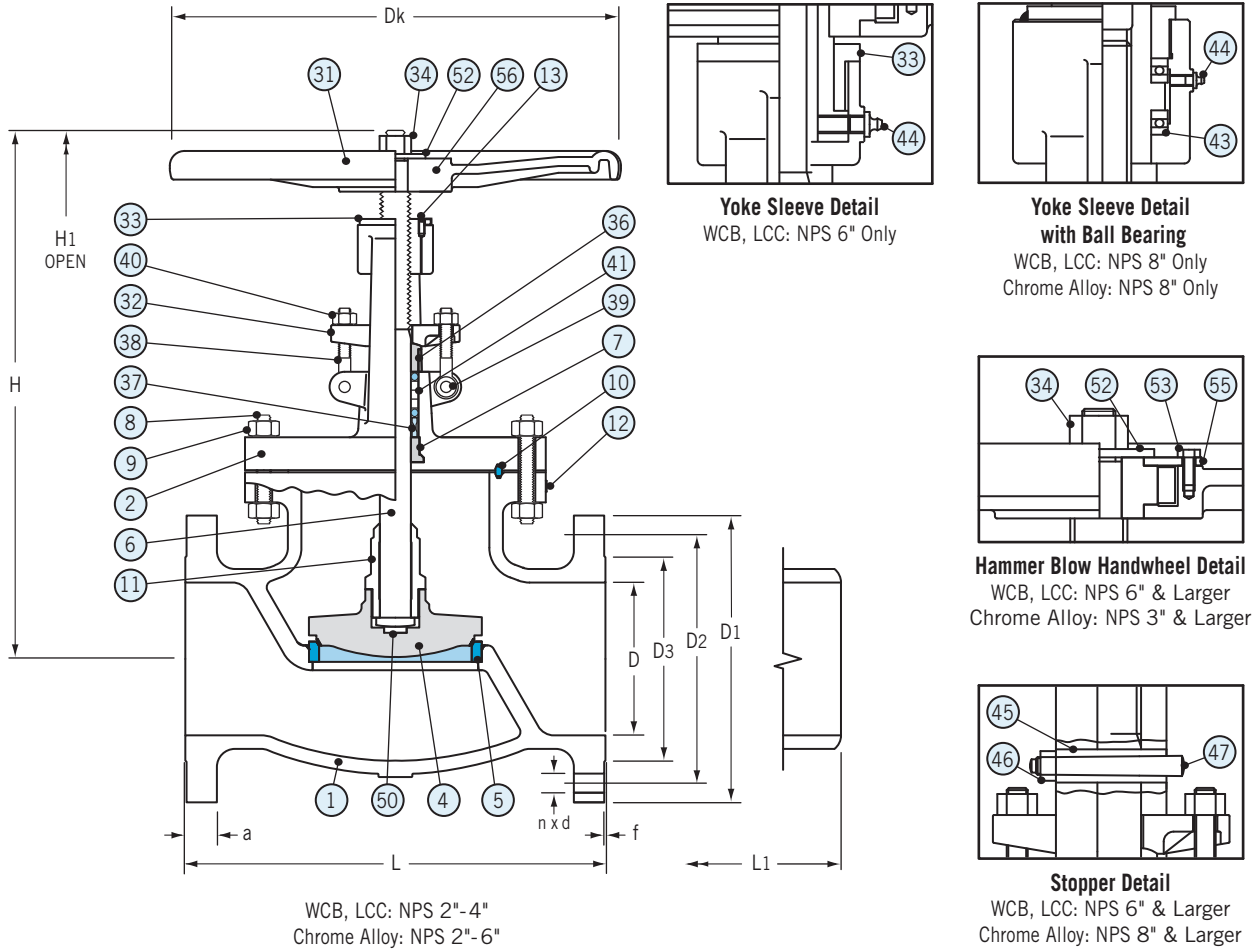
WCB, LCC: NPS 8" & Larger
 Chrome Alloy: NPS 4" & Larger

Dimensional Data (in.) & Flow Coefficient (C_v)

End Flange

Size	Bolt Hole					D ₃	a	f	L	L ₁	H	H ₁ (Open)	D _k	Wt. Lbs.	C _v
	D	D ₁	D ₂	n	d										
2	2.00	6.50	5.00	8	0.75	3.62	0.91	0.06	10.50	10.50	13.85	15.28	9.80	66.0	46.5
2 1/2	2.50	7.50	5.87	8	0.87	4.13	1.02	0.06	11.50	11.50	—	16.73	11.80	83.6	84.5
3	3.00	8.25	6.63	8	0.87	5.00	1.14	0.06	12.50	12.50	16.10	18.27	11.80	110.0	104.7
4	4.00	10.00	7.87	8	0.87	6.18	1.26	0.06	14.00	14.00	18.78	22.24	14.00	167.2	165.0
6	6.00	12.52	10.63	12	0.87	8.50	1.46	0.06	17.50	17.50	22.75	24.30	17.70	324.0	436.7
8	8.00	15.00	13.00	12	0.98	10.63	1.65	0.06	22.00	22.00	26.85	29.40	23.60	602.8	692.9
10	10.00	17.50	15.25	16	1.12	12.75	1.88	0.06	24.50	24.50	34.57	35.94	23.60	981.2	1120.6
12	12.00	20.50	17.75	16	1.26	15.00	2.01	0.06	28.00	28.00	37.91	44.25	27.90	1320.0	1882.4

Note: All information is subject to change without notice.



Dimensional Data (in.) & Flow Coefficient (C_v)

End Flange

Size	D	D ₁	Bolt Hole			D ₃	a	f	L	L ₁	H	H ₁ (Open)	D _k	Wt. (Lbs.)	C _v
			D ₂	n	d										
2	2.00	6.50	5.00	8	0.75	3.62	1.00	0.25	11.50	11.50	16.33	16.89	14.00	92.40	46.2
2 1/2	2.50	7.50	5.88	8	0.87	4.13	1.14	0.25	13.00	13.00	18.30	20.87	14.00	132.44	73.2
3	3.00	8.25	6.62	8	0.87	5.00	1.25	0.25	14.00	14.00	20.27	22.05	13.80	171.60	103.9
4	4.00	10.75	8.50	8	0.98	6.18	1.50	0.25	17.00	17.00	23.97	25.98	17.70	300.74	189.7
6	6.00	14.00	11.50	12	1.10	8.50	1.88	0.25	22.00	22.00	31.00	32.99	22.05	684.20	394.5
8	7.88	16.50	13.75	12	1.25	10.62	2.19	0.25	26.00	26.00	35.25	50.43	24.80	951.50	795.8

Contact your DSI® salesperson for Class 900 and 1500 Dimensional Data. • Note: All information is subject to change without notice.